



2024 WCV

Child and Adolescent Well-Care Visits

Child and Adolescent Well-Care Visits (WCV) 2024

Well Child Visits



Assessing physical, emotional and social development is important at every stage of life, particularly with children and adolescents. Well-care visits provide an opportunity for providers to influence health and development and they are a critical opportunity for screening and counseling.

Child and Adolescent Well-Care Visits (WCV) 2024

- Quick Overview

Measure Description

Percentage of members ages 3-21 years who had one or more comprehensive well-care visits with a primary care provider or OB-GYN during the current performance period

Data Collection Method: Administrative - Claims

Measure Steward: National Committee for Quality Assurance (NCQA)



Patients 3-21 years of age



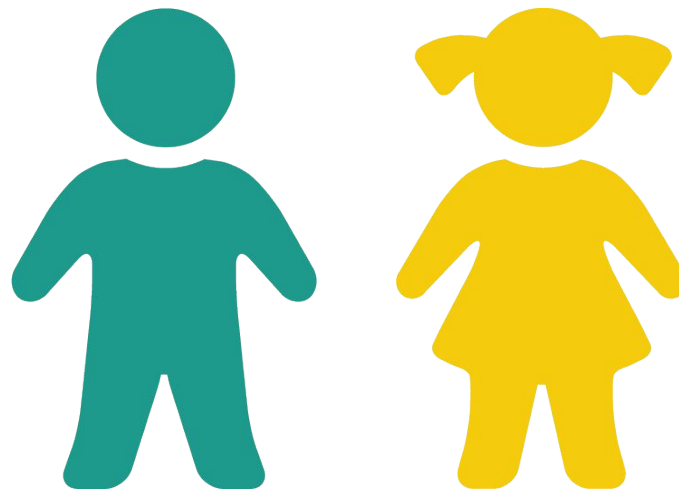
Had one or more comprehensive well-care visits in the current performance period

Child and Adolescent Well-Care Visits (WCV)

Required Exclusions

These exclusions can be verified via claims

- **Hospice or hospice services** anytime during the current performance period
- Patients who **passed away** anytime during the current performance period



Child and Adolescent Well-Care Visits (WCV)

Best Practices



- If a provider is seeing a patient for Evaluation and Management (E/M) services and **all** well-child visit components are completed: Attach modifier -25 or -59 to the well-child procedure code so it's reviewed as a significant, separately identifiable procedure.
 - **Modifier -25** is used to indicate a significant and separately identifiable evaluation and management (E/M) service by the same physician on the same day another procedure or service was performed.
 - **Modifier -59** is used to indicate that 2 or more procedures were performed at the same visit, but to different sites on the body.
- Utilize reporting made available to you to identify the patients who need well-child visits
- The well-child visit must occur with a PCP, but the PCP does not have to be the practitioner assigned to the child.



QUESTIONS?

Please reach out to **EMAIL:** carepartnersquality@privahealth.com